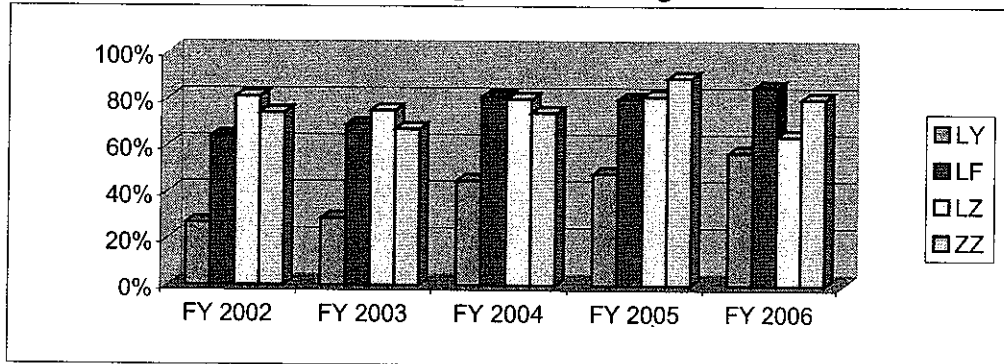
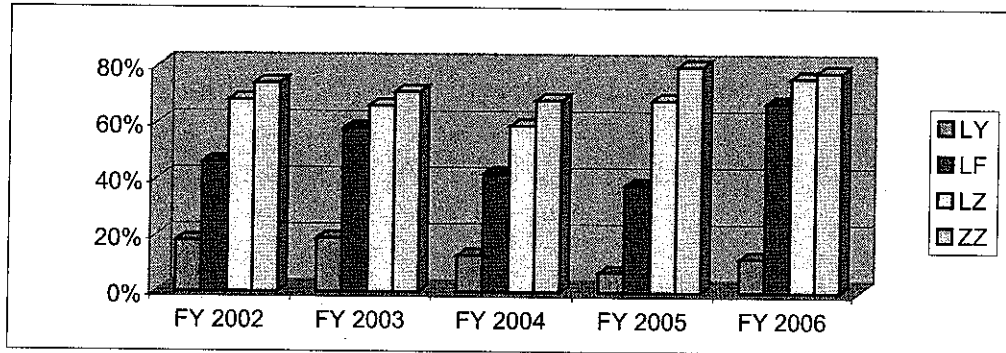


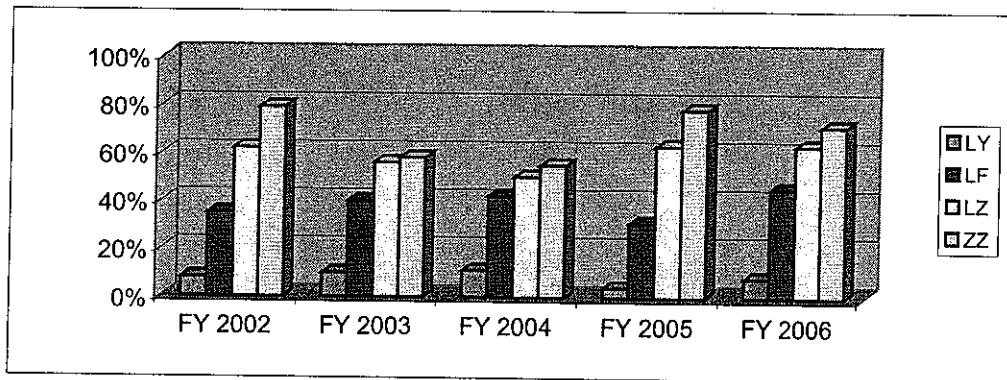
**4TH Grade FCAT Reading  
Percent of Students Meeting or Exceeding Level 2 Standard**







**8th Grade FCAT Reading  
Percent of Students Meeting or Exceeding Level 2 Standard**



**10th Grade FCAT Reading  
Percent of Students Meeting or Exceeding Level 2 Standard**



-  Active Limited English Proficient Students
-  Former Limited English Proficient Students in two year post reclassification monitoring
-  Former Limited English Proficient Students
-  Non-Limited English Proficient Students